

## Machine details

<b>Name</b>	4m swivel bending machine
<b>Item Number</b>	359
<b>Manufacturer</b>	Hans Schroder
<b>Type</b>	
<b>Available from</b>	Immediate
<b>Quality</b>	Good Working Condition
<b>Location</b>	Hefer Valley

## Description

4m swivel bending machine  
Bending capacity up to 2.5 mm.  
Good condition.  
Rear stopwatch calculated.  
Stopper depth 1500 mm.  
max opening 240mm

## Costs

<b>Auction Fee</b>	15%
<b>VAT</b>	VAT Not Included
<b>Delivery Terms</b>	Factory gate loading by us
<b>Cost Loading</b>	NIS
<b>Shipping costs</b>	
<b>Payment terms</b>	Full payment before collection

## Technical details

<b>Dimensions</b>	2900 x 1800 x 5400 mm
<b>Weight</b>	3300 kg

## Contact details

<b>Name</b>	גונן שרוני
-------------	------------

**Phone**

**Fax**

**Mobile**

0526697736

**Email**

pombit.com@gmail.com

## Gallery



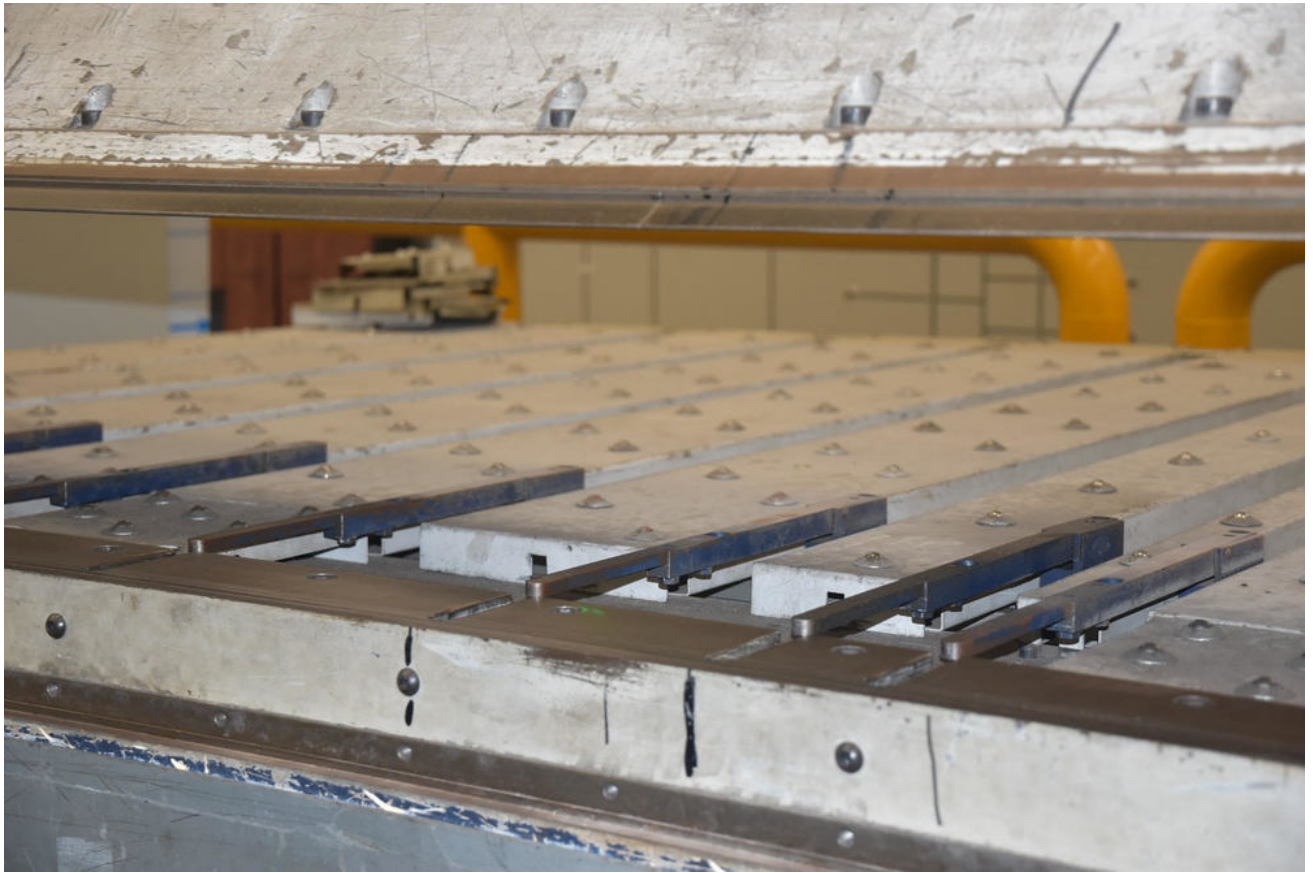


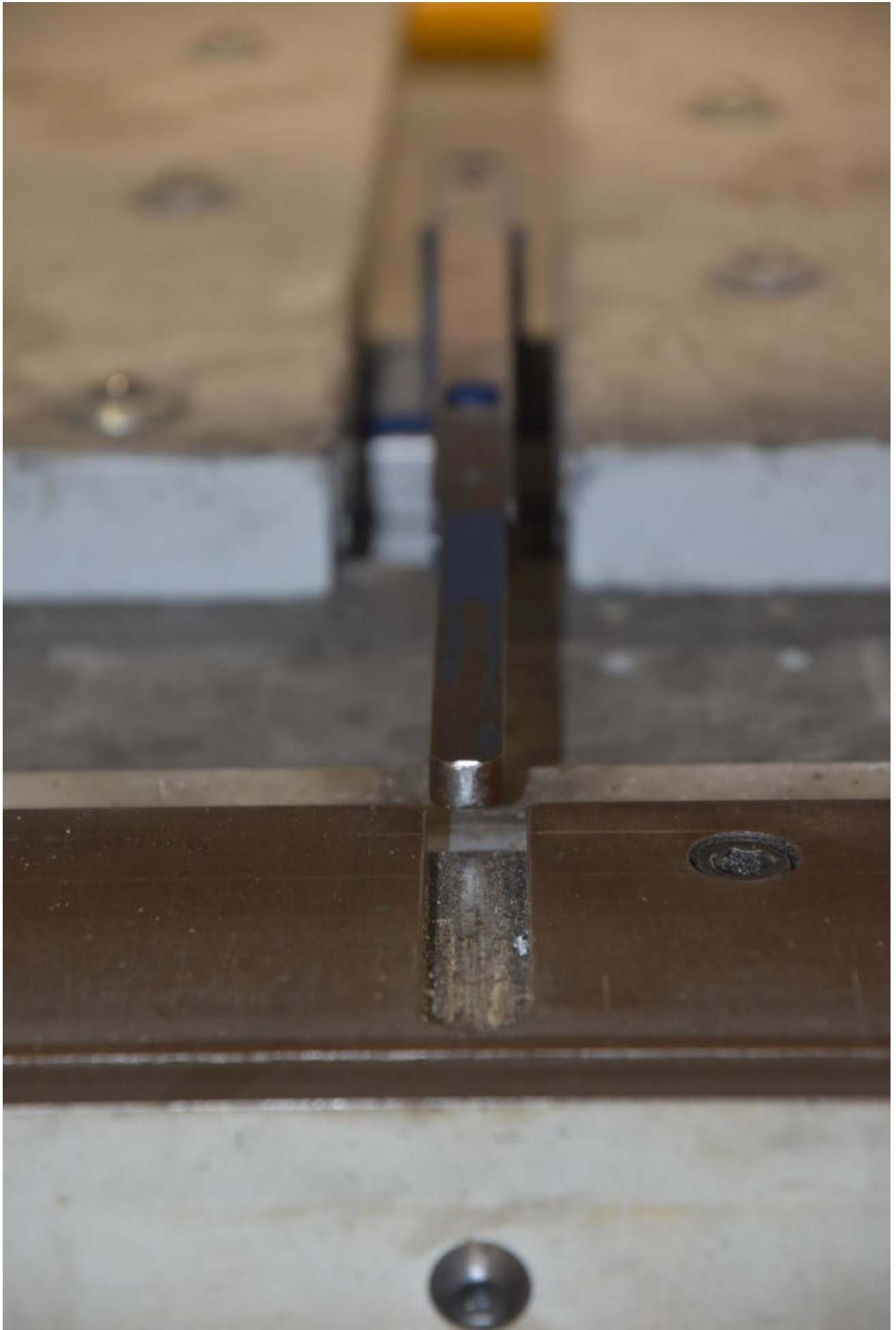


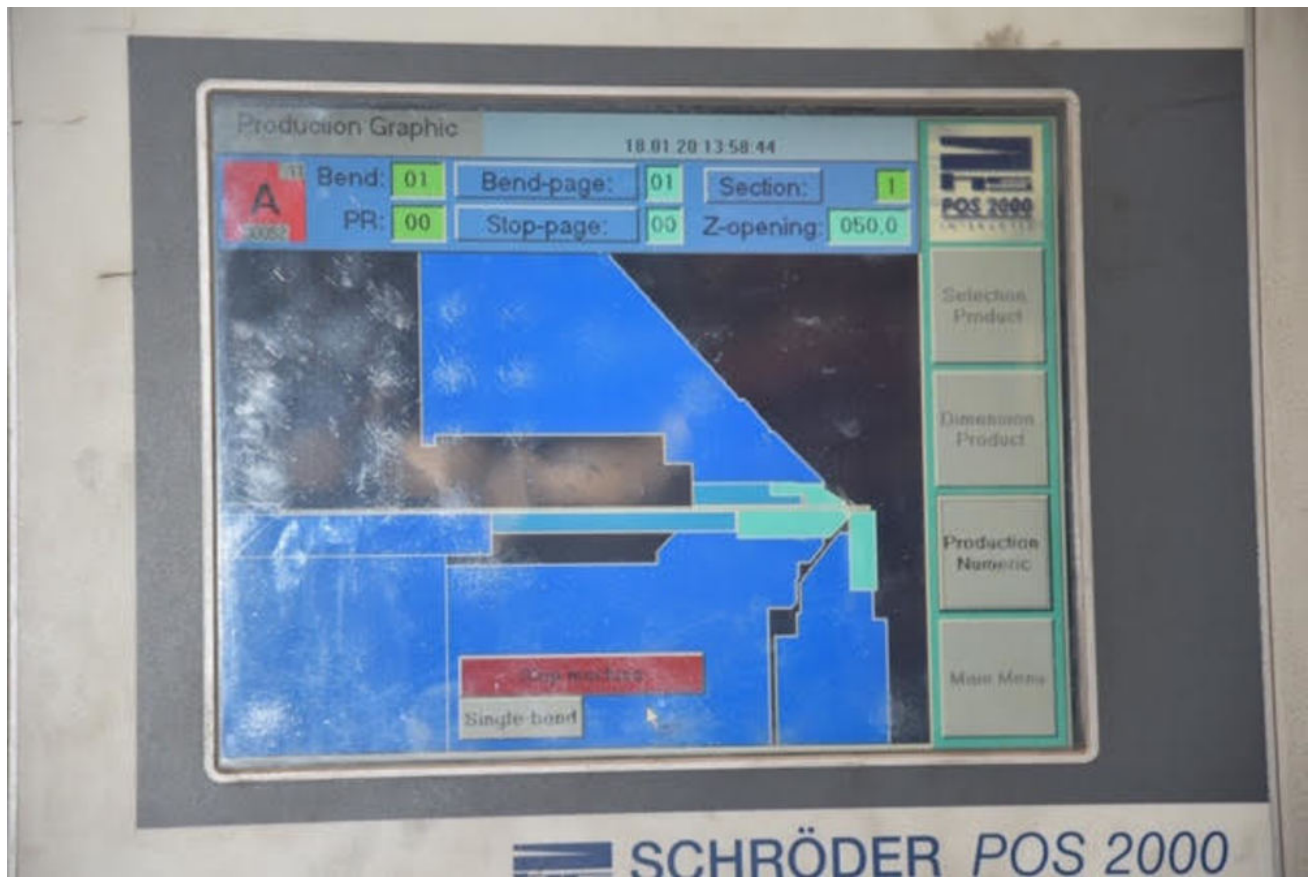














**Hans Schröder**  
Maschinenbau GmbH



B2405 Weissobrunn-Forst  
Tel. 08809-9220-0



**MASCHINEN GmbH  
SERVICE-CENTER  
KUNDENDIENST**

**D-70806 KORMWESTHEIM  
MAX-PLANCK-STRASSE 1  
TEL: 07154 - 8208-0  
FAX: 07154 - 8208-25**

**info@hezinger.de  
www.hezinger.de**



Typ	MAK 3 4000/2,5
Maschinen Nr.	220204
Leistung ( $R_m$ 400 N/mm <sup>2</sup> )	2,5 mm
Baujahr	2004
Nennspannung	3/PE/400 V-50 Hz
Nennleistung	10,0 kVA
Schaltplan	239 009 16-3
Pneumatik	---
Gewicht	3280 kg



Hans Schröder Maschinenbau GmbH  
Feuchten 2, D-82405 Wessobrunn-Forst

Tel.: +49(0)8809/92 20-0  
Fax: +49(0)8809/10 19

info@schroeder-maschinenbau.de  
www.schroeder-maschinenbau.de