

## Machine details

<b>Name</b>	VDF 1000mm lathe
<b>Item Number</b>	236
<b>Manufacturer</b>	VDF - GERMANY
<b>Type</b>	V3
<b>Available from</b>	Immediate
<b>Quality</b>	Working Condition
<b>Location</b>	holon

## Description

VDF - 1000

Measuring between sting 1000mm .

The lathe will be provided with 3-jaw chuck & 4-jaw chuck

Swing over bed 530 mm.

diameter over support 270 mm.

Taper of tailstock sleeve MK-5

Diameter hole passing - 60 mm

## Costs

<b>Auction Fee</b>	15%
<b>VAT</b>	VAT Not Included
<b>Delivery Terms</b>	loading factory gate by the buyer
<b>Cost Loading</b>	NIS
<b>Shipping costs</b>	
<b>Payment terms</b>	Full payment before collection

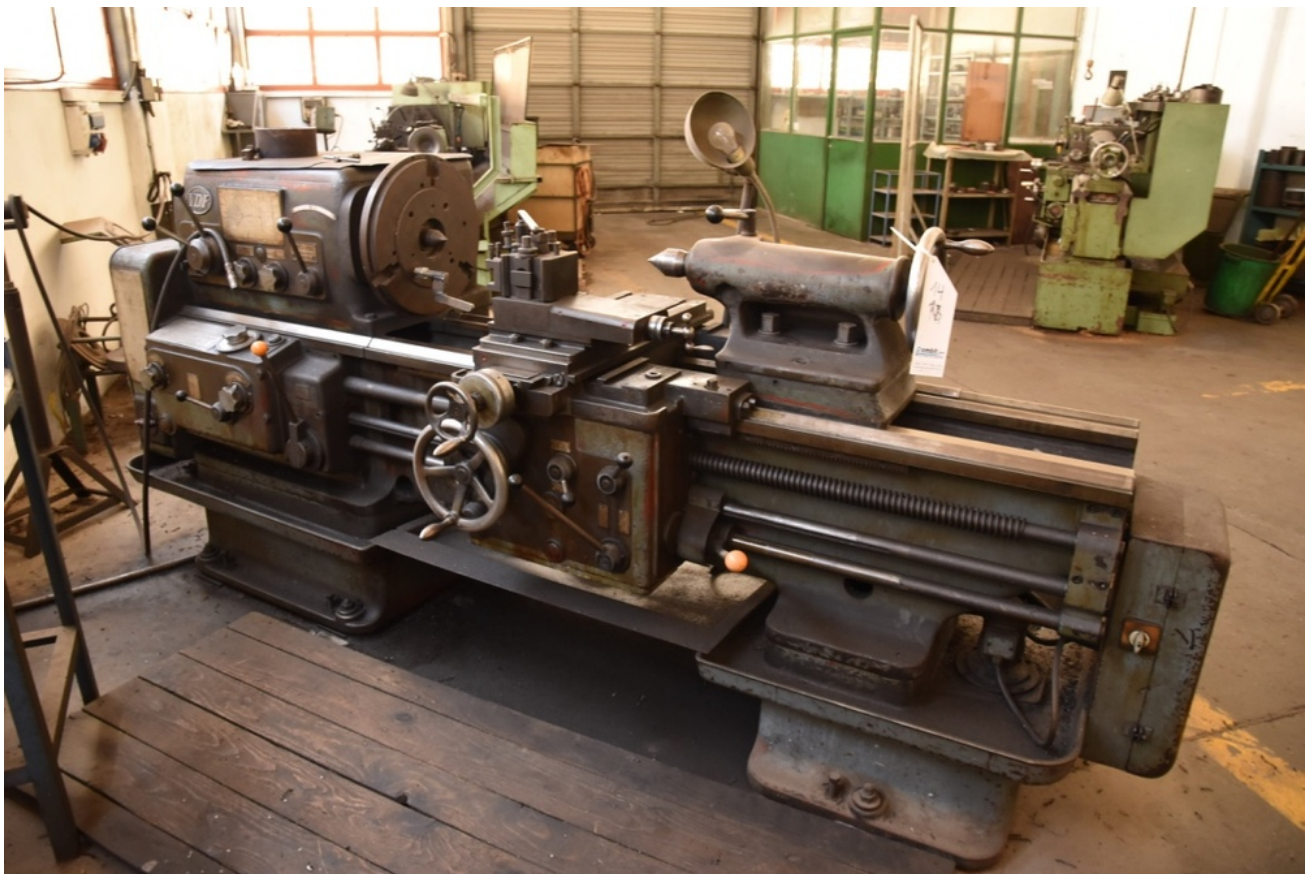
## Technical details

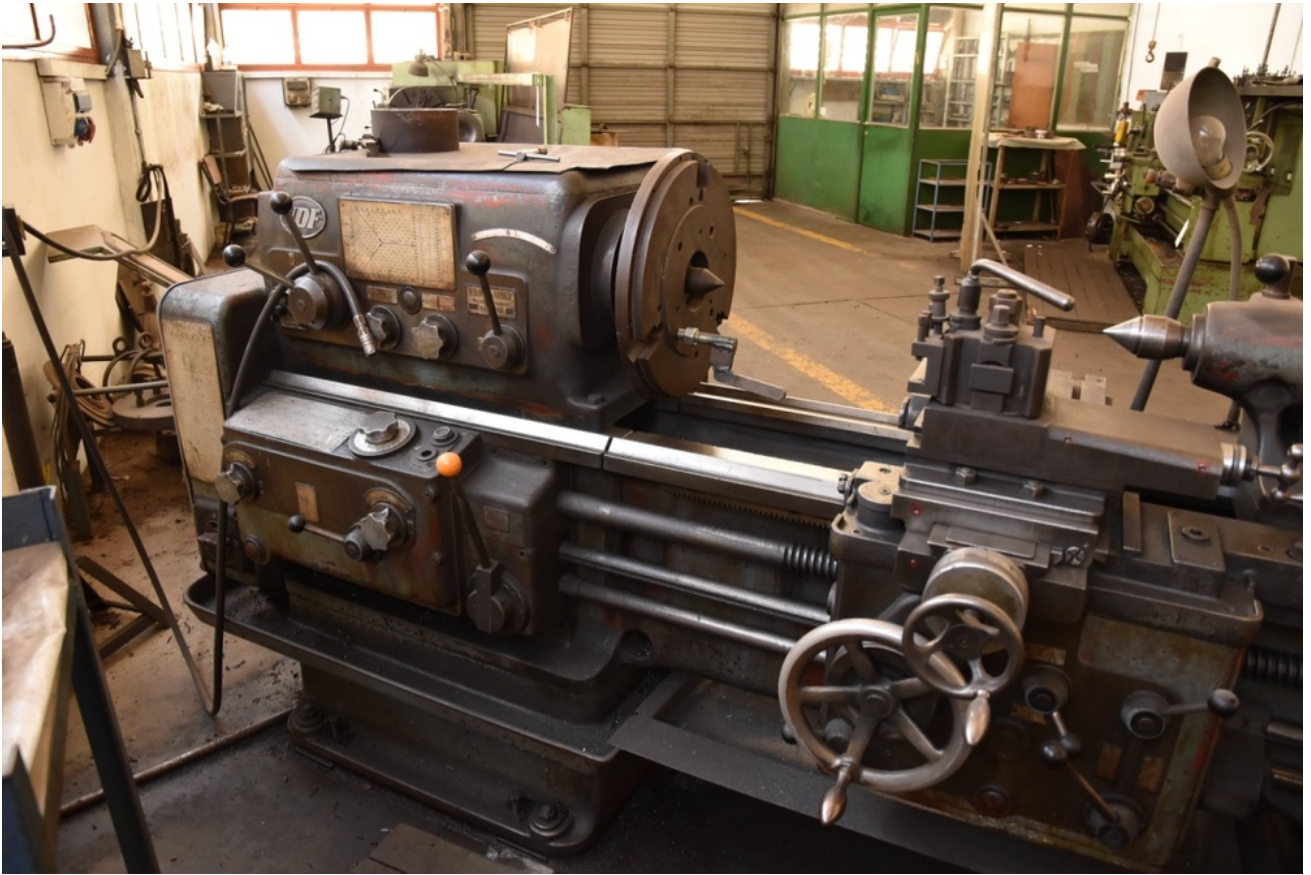
<b>Dimensions</b>	1150 x 1280 x 3150 mm
<b>Weight</b>	kg

## Contact details

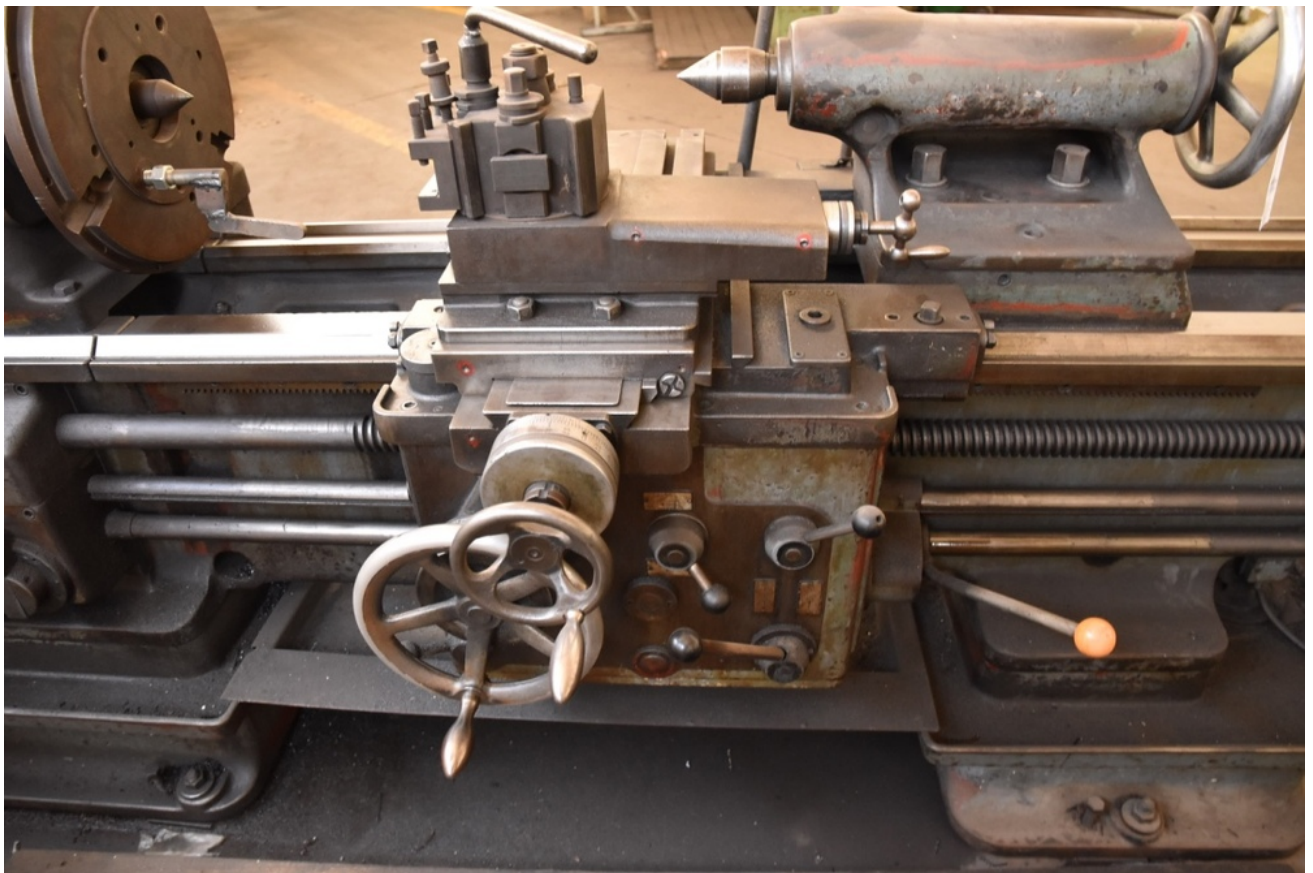
**Name** גונן שרוני  
**Phone**  
**Fax**  
**Mobile** 0526697736  
**Email** pombit.com@gmail.com

## Gallery











1182/4e

Type	V 3	Type of curr.	3~
No.	89 0121-2459	Cycle/seco.	50

Supply voltage	380	Volt
Control voltage	220 Volt	Transformer
Total rated current	12	Amps
Supply line cross-sect.	2,5	mm <sup>2</sup> Cu

Safety fuse ratings

fast		slow	15
------	--	------	----

Wiring Plan	131 Vp24b
-------------	-----------

Heidenreich & Harbeck, Hamburg