

Machine details

Name	HME - 100 TON Press
Item Number	130
Manufacturer	HME (cincinnati)
Type	R2-100
Available from	Available
Quality	Good Working Condition
Location	Holon

Description

Mechanical Press
100 ton
decoiler for 1 ton
Pneumatic material feeder
Including a guillotine for cutting excess material
Excellent working condition
Operating manual + foot pedal + automatic

Straight double sided - 100 Ton
Pneumatic friction clutch and brake
"Ungeared Stroke: fixed 4
"Shut height (stroke down, adjustment up): 12
"Slide adjustment: 2
Speed: 80-250 spm
Bed size: (L-R)36" x 27" x (F-B)12" wide side windows
Lubrication: automatic oil
Slide balance: yes - pneumatic

See pictures + video+Documents

Costs

Auction Fee	15%
VAT	VAT Not Included
Delivery Terms	loading factory gate by the buyer

Cost Loading	NIS
Shipping costs	
Payment terms	Full payment before collection

Technical details

Dimensions	1220 x 3550 x 2300 mm
Weight	11500 kg

Contact details

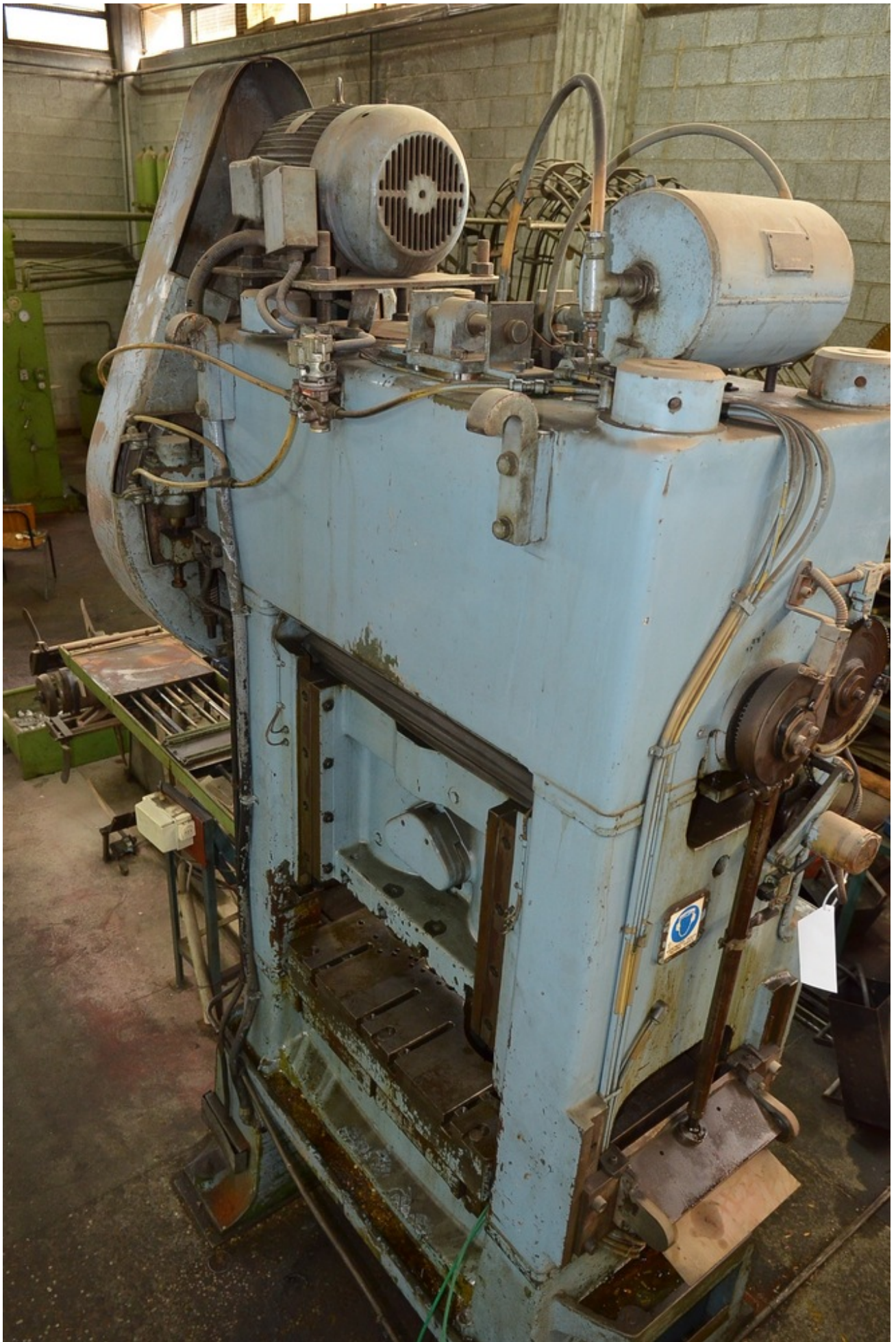
Name	גונן שרוני
Phone	
Fax	
Mobile	0526697736
Email	pombit.com@gmail.com

Gallery











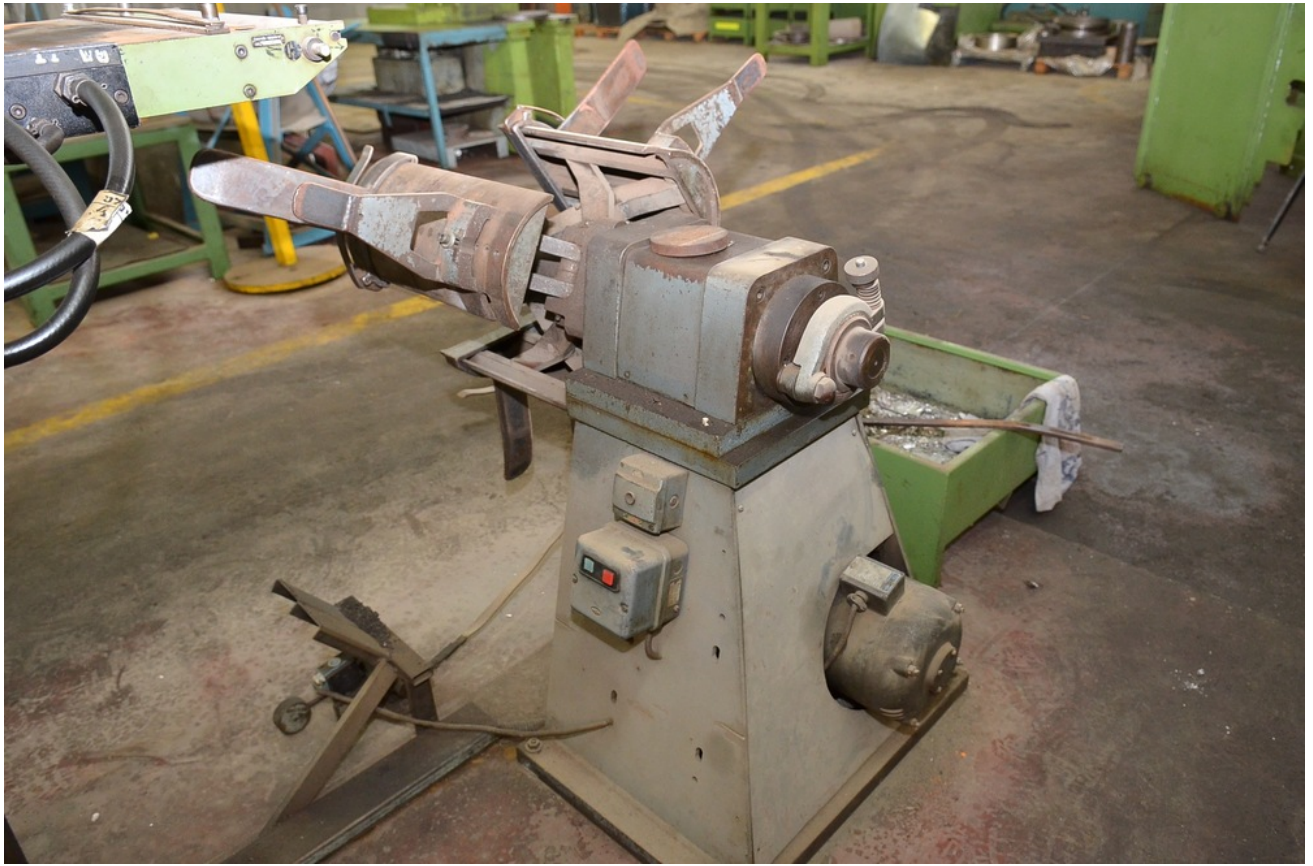














YASKAWA

VARISPEED 616PC5

STATUS
RUN STOP

8.8.8.8

PRG	REV	STOP	STOP
REV	MRG	APPR	DATA
USER	NOV	FOUN	FOUN
DOA	DOA	DOA	DOA

PORT 1 OPERATOR

ENTER

↑

↓

STOP
RESET

WARNING

May cause injury or electric shock.

- Please follow the instructions in this manual before installation for safe use.
- Check main switch before opening front cover of unit. Wait 5 minutes until DC link capacitors discharge. It is a danger if touching terminals directly while you ground the supply cables.

AVERTISSEMENT

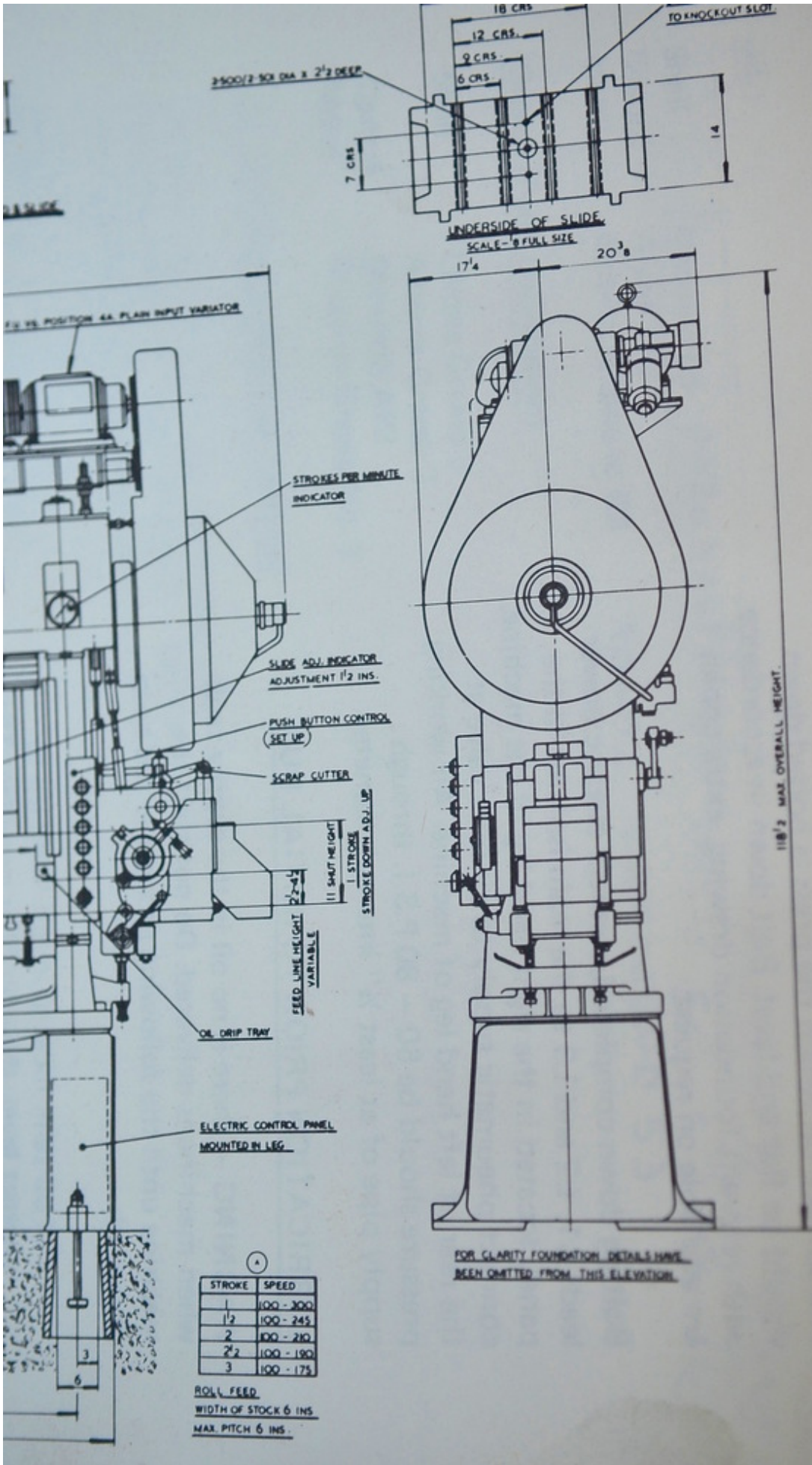
Risque d'accident ou de choc électrique.

- Suivre le mode d'emploi avant l'installation et l'utilisation.
- Ne pas ouvrir le couvercle avant 5 minutes après la coupure de l'alimentation de l'unité afin que les condensateurs du DC link soient déchargés.
- Ne pas toucher les bornes directement.
- Assurez-vous que le neutre est à la masse.

**OPERATION, SERVICE
AND PARTS LIST MANUAL
FOR RIGISPEED RANGE
OF POWER PRESSES**

1985 02
8

CINCINNATI
MILLING MACHINES LIMITED
HME DIVISION
KINGSBURY ROAD, BIRMINGHAM 24



①

STROKE	SPEED
1	100 - 300
1/2	100 - 245
2	100 - 210
2 1/2	100 - 190
3	100 - 175

ROLL FEED
 WIDTH OF STOCK 6 INS.
 MAX PITCH 6 INS.